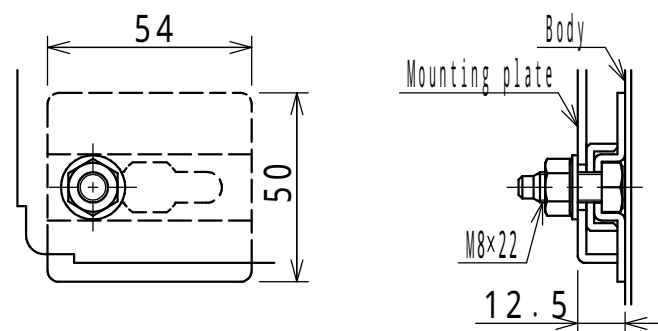


NOTE

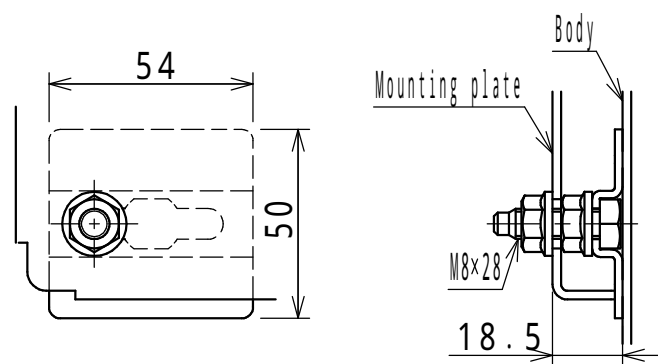
- The drawing holder is attached with screws.
Storage dimensions: W235 x H250 x thickness 38
- Angle of eyebolt may vary depending on each enclosure.

There is a bend (vertical direction) in center of rear side as shown in above drawing, so be careful when installing equipment.
Cross section F-F

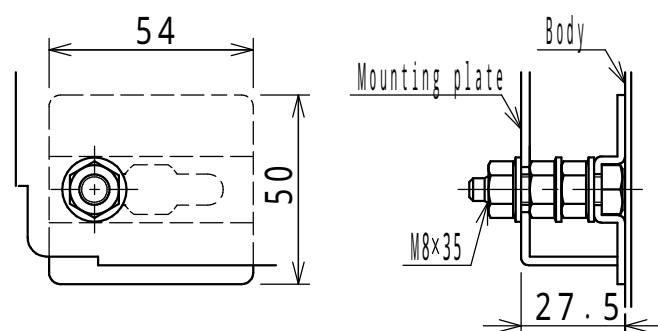
Enclosure specification			Model	E 50 - 1419A						
Type	Indoor use, Floor standing, E50-1419A									
Body	Steel	t 2.3	Drawing A3 scale	<div>1/3</div>						
Door/ Cover	Steel	t 2.3								
Mounting plate	Steel	t 2.3								
Color	Standard / Light beige (5Y7/1)		Scale	1:20	Design	INOUE	Draw	NGUYEN	Check	SUZUKI
IP	IP4X									
Weight	237.0 kg									
			Date: 25 / Mar. / 2021							



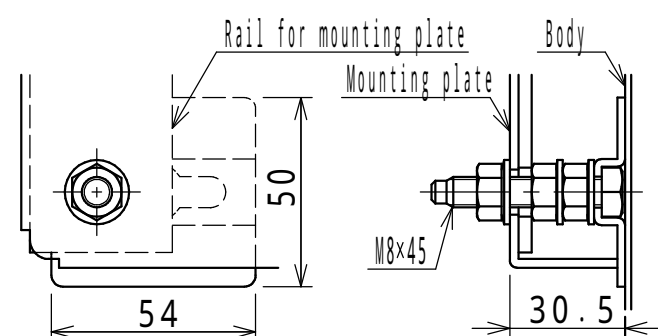
$H \leq 900\text{mm}$



$1000\text{mm} \leq H \leq 1900\text{mm}$

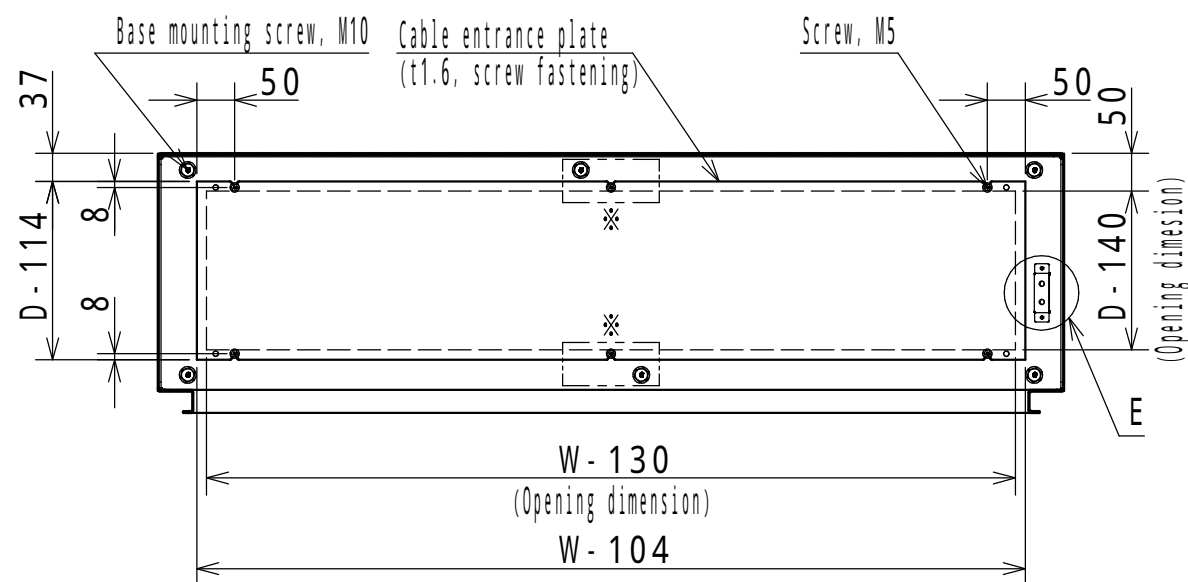


$2000\text{mm} \leq H$



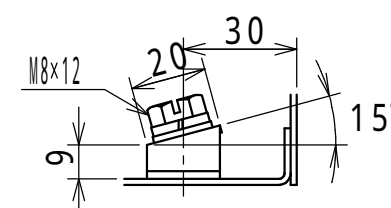
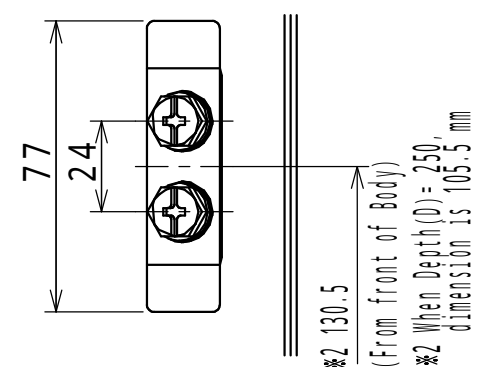
E25-1619A
E35-1616A, 1618A, 1619A, 1620A, 1621A
E40-1616A, 1618A, 1619A, 1620A, 1621A
E50-1616A, 1618A, 1619A, 1620A, 1621A, 1623A

Detail C: Mounting plate installation(1:2)



Cross section B-B

* \square The holes are for $W \geq 1400\text{mm}$ only.
W: Product Width
H: Product Height
D: Product Depth



Detail E: Earth terminal(1:2)

Model	Detail view E					
Drawing A3 scale						2/3
Scale	Design	ITOU	Draw	NGUYEN	Check	SUZUKI
Date: 25 / Mar. / 2021						

