

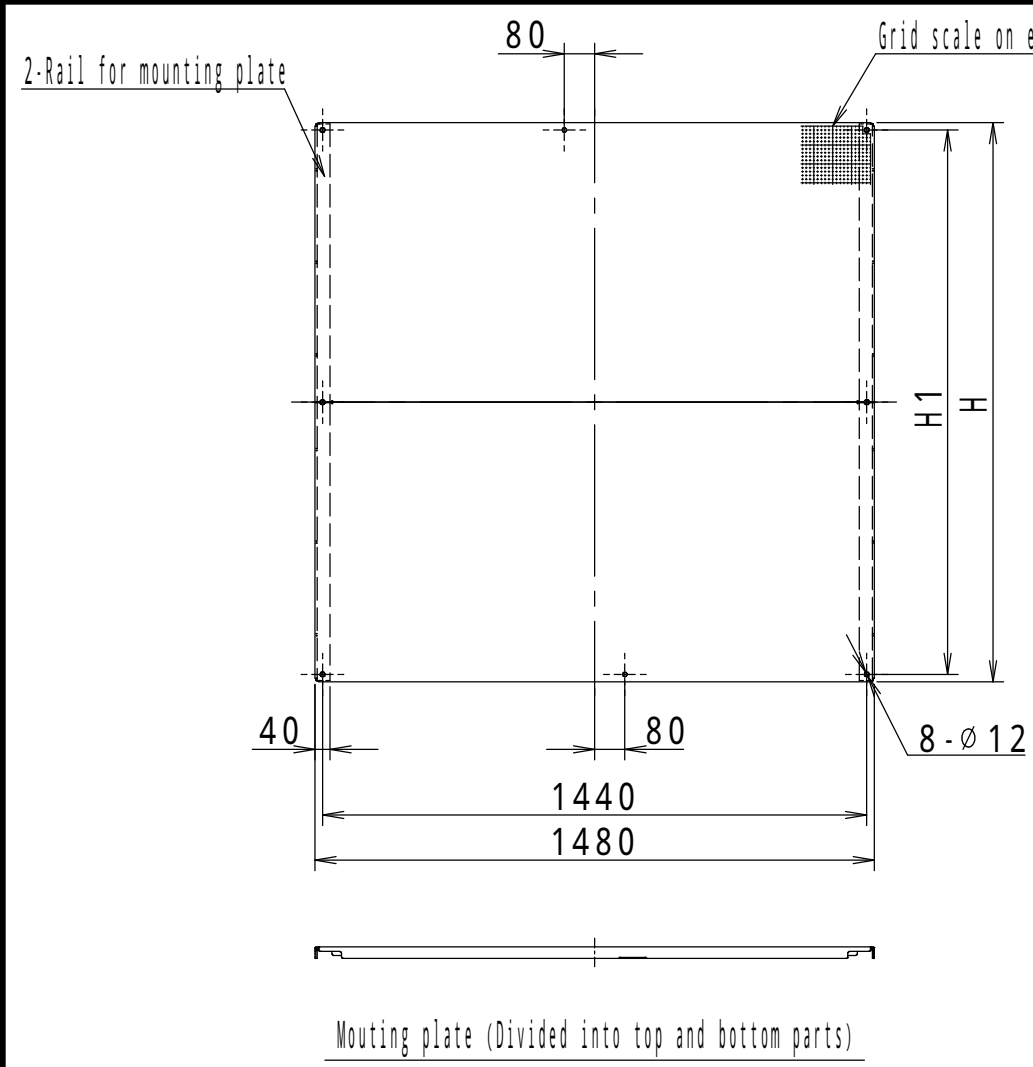
**NOTE**

1. The drawing holder is attached with screws.  
Storage dimensions: W235 x H250 x thickness 38

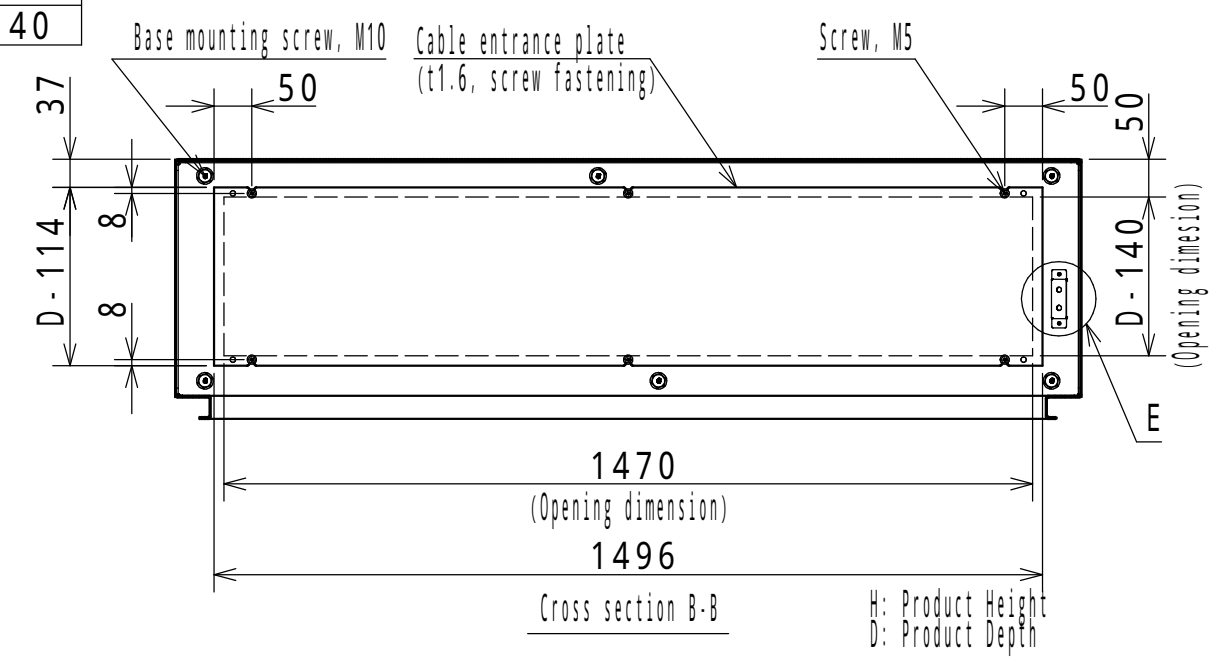
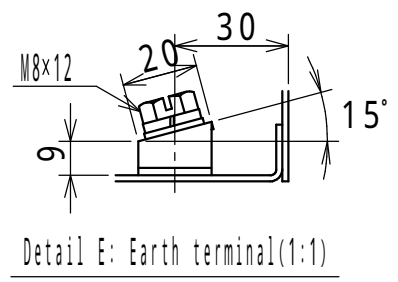
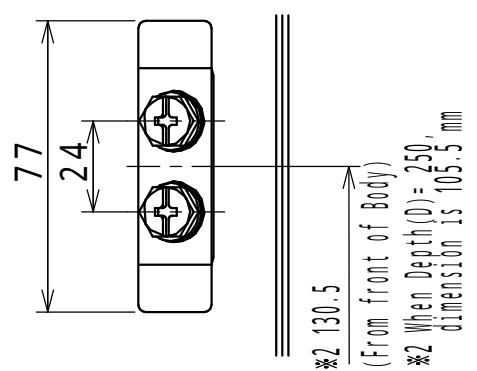
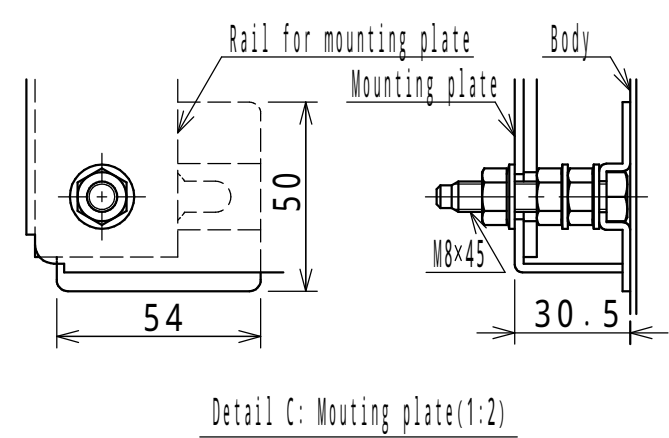
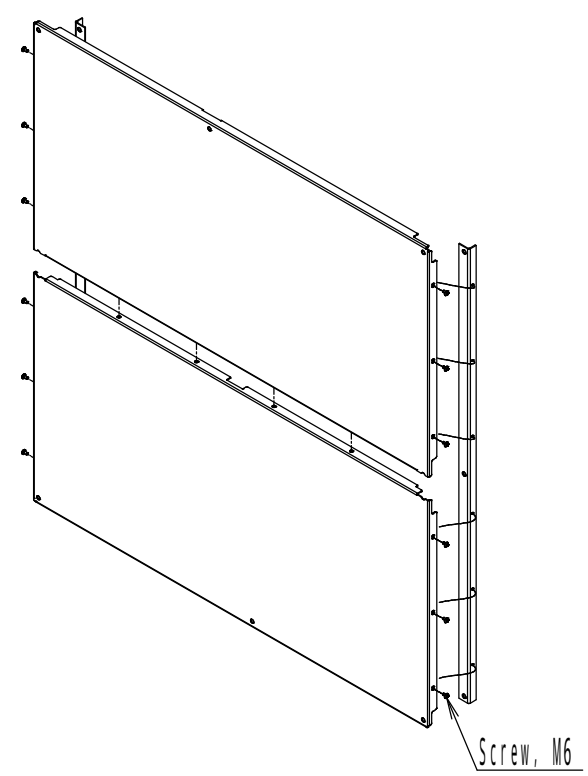
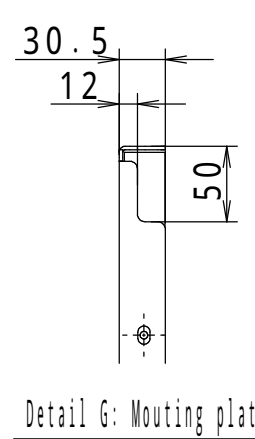
2. Angle of eyebolt may vary depending on each enclosure.

There is a bend (vertical direction) in center of rear side as shown in above drawing, so be careful when installing equipment.

Enclosure specification				Model Drawing A3 scale	E 50 - 1621A						
Type	Indoor use, Floor standing, E50-1621A										
Body	Steel	t 2.3									
Door / Cover	Steel	t 2.3									
Mounting plate	Steel	t 2.3									
Color	Standard / Light beige (5Y7/1)				Scale 1:25	Design	INOUE	Draw	NGUYEN	Check	SUZUKI
IP	IP4X										
Weight	294.0 kg										
					Date: 25 / Mar. / 2021						



Product name	H	H1
E**-1616A(C)	1480	1440
E**-1618A(C)	1680	1640
E**-1619A(C)	1780	1740
E**-1620A(C)	1880	1840
E**-1621A(C)	1980	1940
E**-1623A(C)	2180	2140



Model	Detail view E					
	Drawing No. 2/3					3
Scale	Design	ITOU	Draw	NGUYEN	Check	SUZUKI
Date: 25 / Mar. / 2021						

