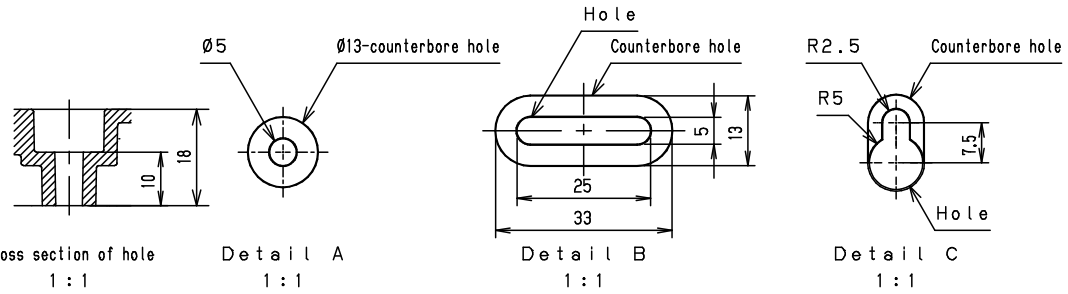


Note :

- Remove the processed part of the knockout for the input / output line so that no protrusions or burrs remain.
(入出力用ノックアウトの加工等は、突起やバリが残らないように除去してください。)
- A coin lock can be attached. Please order separately.
(コインロックの取付が可能です。別途ご用意ください。)



Model	Wall-mounting, indoor-use, PTM8-252TH	Name/Type	PTM8-252TH			
Body	Polystyrene, t3.0					
Door	Polystyrene, t2.5					
Mounting plate	Steel sheet, t1.6					
Base	-	Drawing number	-			
Color	Outside	White (N-9.5)	A3 scale	Scale	1:5	
	Inside	White (N-9.5)		Design	SUPAKIT	
IP	IP2X (Excludeing the wiring on the back)		Drawing	SUPAKIT	Check	KONISHI
Weight	0.9 kg	Date	11 / Oct. / 2021			