

IoT Access Board CMB-TH (IoTアクセス盤・CMB-TH)

Outline

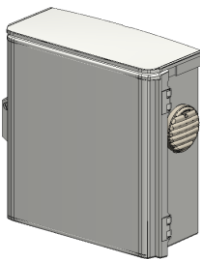
Compactly stores network(NW) equipment space and power supply circuit.

(ネットワーク(NW)機器スペースと電源回路などをコンパクトに収納)

- The required functionality is packaged, simplifying design and procurement.
(必要な機能がパッケージ化されているため、お客様側での設計・手配が簡素化)
- Can be used outdoors.
(屋外で使用可能)
- There are 9 types in all.
(システム設計仕様に合わせ、全9種類をラインアップ)
- A fan is standard equipment as a measure against the temperature rise inside the panel.
(盤内温度上昇対策として、盤用ファンを標準搭載)

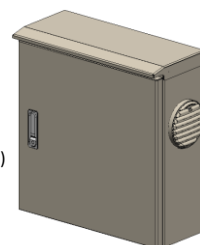
●Wireless communication compatible type (無線通信対応タイプ)

- Resin enclosure (樹脂製キャビネット)
- Package contents (パッケージ内容)
 - Power circuit (電源回路)
 - Optical connection* (光接続部*)
 - NW equipment space (nw機器収納部)
e.g. 5G/Wi-Fi router, PoE Injector
 - Climate control (温度制御)



●Wired communication compatible type (有線通信対応タイプ)

- Steel enclosure (鋼板製キャビネット)
- Package contents (パッケージ内容)
 - Power circuit (電源回路)
 - Optical connection* (光接続部*)
 - NW equipment space (nw機器収納部)
e.g. Switching hub, PoE Injector
 - Climate control (温度制御)



* This applies to models with optical cable input specifications. (nw回路仕様が光ケーブル入力の機種が該当します。)

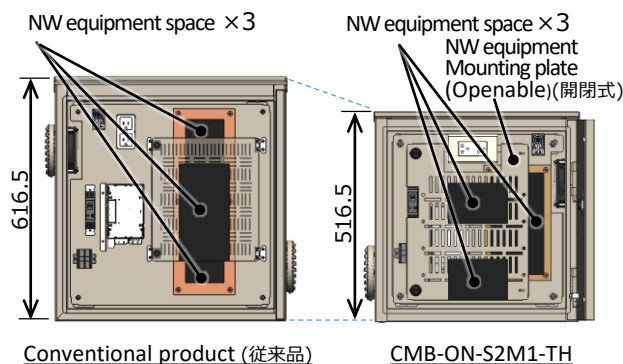
Feature

Small design (小型設計)

- It is smaller than traditional products due to the optimal design inside the panel.
(盤内最適設計により、従来品より小型化を実現)

«Applicable model(対象機種)»

CMB-ON-S2M1-TH, CMB-WN-S2M1-OPK-TH, CMB-WN-S2M1-PL-TH

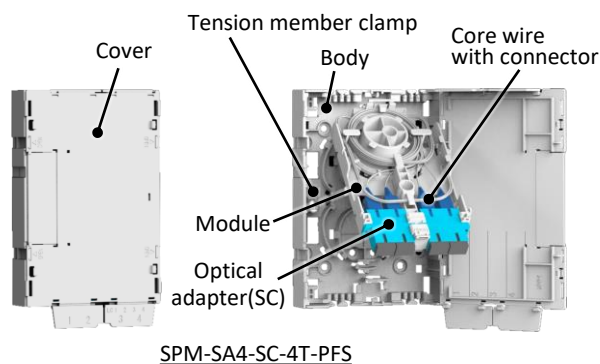


Workability (省施工)

- The optical junction box (SPM-PFS) is a pre-wiring specification, so wiring work time can be shortened.
(“SPM-PFS”はプレ配線仕様のため配線作業時間が短縮)

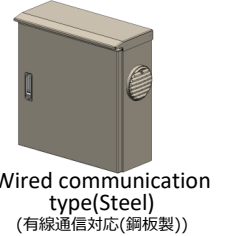
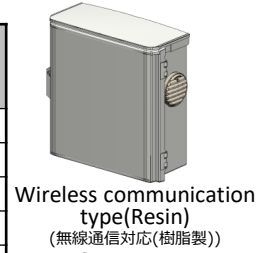
«Applicable model(対象機種)»

CMB-ON-M1, CMB-ON-S2M1, CMB-ON-S2-OPK, CMB-ON-S2-PL

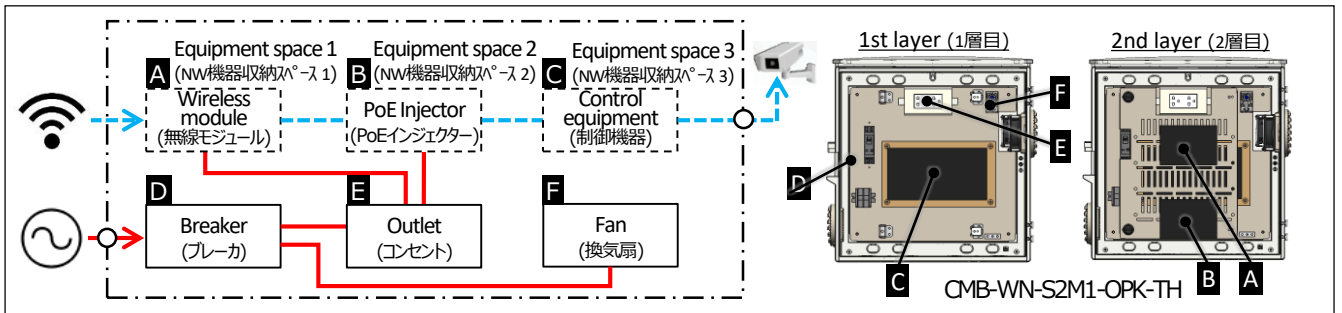


Specification

Communication specifications (通信仕様)		Wireless communication type (無線通信対応)	Wired communication type (有線通信対応)
Enclosure	Material (材質)	Resin	Steel
	Model (品名記号)	OPK-A	OR-TH
	Color (塗装色)	N8.5 (ホワイトグレー色)	5Y7/1 (LB色)
	Fan model (換気扇)	ASEN80216(Panasonic製)	XF-4(KAM製)
	IP (保護等級)	IP44	IP55
Power circuit (電源回路)	Wiring system (相線式)	1Φ2W 230V 50Hz	
	MCB (配線保護)	SMCB 2P 15AT x1	
	Outlet (コンセント)	2P+E 15A x1	
Optical connection* (光接続部*)	Type (タイプ)	Fusion + SC-Connector (融着+SCコネクタ接続)	
	Number of connections(接続数)	4-Ports (4心)	



* Only models with fiber optic cable input specifications . (光ファイバケーブル入力仕様機種のみ)



Model

Model (品名記号)	NW circuit specifications (NW回路仕様)					Enclosure Size (キャビネット寸法) mm				Enclosure type (適用キャビネット)	
	Incoming (入力仕様)	SPD for LAN (LAN用SPD有無)	Number of NW equipment spaces (NW機器収納スペース数)		Amount of heat of NW equipments (搭載可能熱量)	Body (ボデー寸法)			Max (最大外形) Height (タテ)		
			S size	M size		Wide (ヨコ)	Height (タテ)	Depth (フカサ)			
Resin	CMB-WN-S2M1-OPK-TH	Wireless(無線)	—	2	1	Max 10W	500	500	200	521	OPK20-55A
	CMB-ON-S2-OPK-TH	Optical cable	—	2	—	Max 10W	500	500	200	521	OPK20-55A
	CMB-MN-S1-LA-OPK-TH	Metal cable	○	1	—	Max 11W	400	500	200	521	OPK20-45A
Steel	CMB-ON-M1-TH	Optical cable (光ケーブル)	—	—	1	Max 23W	500	500	200	530	OR20-55TH
	CMB-ON-S2M1-TH		—	2	1	Max 23W	500	500	200	530	OR20-55TH
	CMB-MN-S1M1-TH	Metal cable (メタルケーブル)	—	1	1	Max 22W	500	400	200	430	OR20-54TH
	CMB-MN-S1M1-LA-TH		○	1	1	Max 22W	500	400	200	430	OR20-54TH
	CMB-MN-M1-TH		—	—	1	Max 27W	400	500	200	530	OR20-45TH
	CMB-MN-M1-LA-TH		○	—	1	Max 27W	400	500	200	530	OR20-45TH

	Mountable dimensions of NW equipment (NW機器搭載可能寸法) mm		
	Wide	Height	Depth
S size	~145	~100	~50
M size	~130	~250	~50

Rev.1

NITTO NITTO KOGYO BM (THAILAND) CO., LTD.

No.43 Thai CC Tower, Room A 244, 24 th FL. Sathorn Road, Yannawa, Bangkok 10120, THAILAND
Tel: +66(0)2652-5156, +66(0)2652-5092-3 FAX: +66(0)2652-5157

